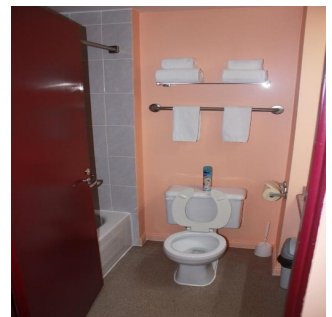
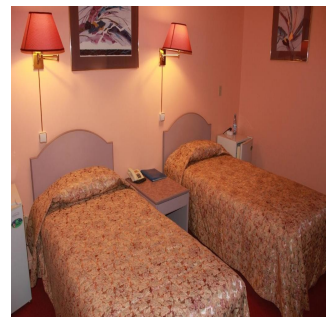


In search of Arctic beasts

Ethnic expedition and animal-watching on Yamal



Yamal, a peninsula in the Northern Russia, is an area of permafrost. Very few can adapt to such harsh conditions. However, the Arctic is home to both humans and animals. On this tour, you can become a real polar nomad for a while, feel the freedom of the tundra and see the rare Arctic endemics — musk oxen.

Experiences you'll have

Muskoxen watching in Yamal

Here is our new expedition tour. For several days you will leave the civilization to fully immerse into the life of the Yamal nomads. You will live in the family of a Nenets reindeer breeders and take part in their daily life. Living in traditional chums in the middle of the winter tundra and tasting traditional cuisine is waiting for you on this journey. It will be a real digital detox and an amazing experience of living in the Arctic.

This tour is an opportunity to visit the Gorno-Khadatinsky Nature Park, where a population of Arctic musk oxen is being restored. These rare animals living in semi-wild conditions become the object of interest of wildlife photographers from all over the world.

5 reasons to join this unusual journey:

daily trips to the habitat of Arctic musk oxen can be organized on snowmobiles, so you can observe the life of these endemic animals in natural conditions from a safe distance
close acquaintance with the reindeer breeders' way of life: while staying with local families, you will live and eat like the Nenets people, and take an active part in their life
you will learn how to look after reindeer, how to harness them to a sledge and ride a reindeer sled
you will visit Salekhard, the only city in the world, located on the Polar Circle, and see the unique mammoth named Luba preserved in permafrost at Shemanovsky Museum
you will solemnly cross the Arctic Circle and receive a personal certificate about this memorable moment

We accept bookings for groups of 6 or more

Note: for your group of 2 or more people we can organize this program on any other dates, see details in the Common Questions section.

Itinerary

The journey begins in Salekhard, where you should get to on your own on the first day of the program by 10 am. We are ready to help with tickets purchasing. If necessary, leave a comment in the application.

Day 1

After meeting at Salekhard airport you will be taken to the

hotel and accommodated in double rooms. After lunch at the hotel restaurant, you will take a bus tour with a guide. There you will see the main sightseeing of Salekhard:

- **a ceremonial crossing of the Polar Circle and awarding of**

the personal certificates. The "66th parallel" stele is a geographical feature of the city, as the only city in the world located on the Arctic Circle

- **the "Mammoth" sculptural composition, which is**

dedicated to the ancient inhabitants of the North

- **the Victory Park - a large-scale cultural and historical**

complex, where military equipment of different eras is represented

- **the Church of the Holy Apostles Peter and Paul, which**

was designed by the German architect Gottlieb Zinke. This is the only surviving religious building of the 19th century in the city and the region, reflecting the history of the spread of Christianity in

Most popular

Yamal

In search of Arctic beasts

Difficulty



Age

from 16 y.o.

Group size

to 5

Duration

8 days

Accommodation at the trip



2 nights 5 nights

Языки



guide

from 1 945 EUR



Siberia. It is an architectural monument of regional importance.

You will also visit the Shemanovsky Museum Complex - the

main museum of Yamal. There a unique permafrost-preserved mammoth Luba is exhibited, which actively travels around the world and attracts queues of thousands in the leading museums of London, Sydney, Hong Kong and other cities of the world.

The Ethnographic hall presents the culture and life of the

indigenous peoples of the North, and in the Hall of archaeological finds, you can learn the history of the famous first Russian polar city - Mangazei.

After the tour, you will return to the hotel, have dinner at

the restaurant and rest.

Day 2

After breakfast at the hotel, you will travel by TRECOL all-

terrain vehicle heading to a reindeer pasture. The way will take 7 to 10 hours, depending on the state of the road and weather conditions.

The route goes along the territory of the

"Gornohadatinsky" national park, which is a specially protected area. You will pass registration at the control point of the reserve. On the way, you will be given lunch boxes for snacks.

After arrival at the camp, you will get acquainted with the

family and be accommodated in the "chum" - reindeer herders' tent.

Day 3

On these days you will live with the Nenets reindeer herder

family and take part in their daily life. You will have the opportunity to learn the basic rules of living in a tent, how to tackle up a reindeer, harness it to a sled and steer it.

You will get acquainted with the way of life of a modern

woman worker in the Yamal tent. The woman's responsibilities are no less important - she builds the house for the whole family. Building the house means to dress, process and cure reindeer skins to make the cover for the tent. Arranging clothes and shoes for the whole family from head to toe is also a woman's job. Much depends on whether the clothes made of reindeer skins will be warm and comfortable: the 40-degree frost in the tundra is not to be trifled with.

You can go to the reindeer herd, feed tame reindeer with

bread, take photos with reindeer, ride the reindeer sled. As an option, ice fishing at a nearby body of water can be arranged, if it fits the schedule of the family. On all the days of your stay in the chum, you will have three meals a day with national cuisine.

If necessary, daily trips to the habitat of Arctic musk oxen

will be organized on snowmobiles with trailed sleds/nats. More than 20 years ago, the first musk oxen were brought to Yamal. Their breeding was successful, and now these Yamal animals live not only here, but have also migrated to other Arctic regions, such

as the Taimyr.

Muskox have inhabited the territory of modern Yamal since

ancient times and were neighbors with mammoths. You will have an opportunity to see these beautiful animals in their natural habitat, but from a safe distance. As despite the program of their population recovery, these animals have never been domesticated.

Day 4

After breakfast in the chum, you will be transferred back

to Salekhard by TRECOL all-terrain vehicle (7-10 hours, depending on the state of the road and weather conditions). A picnic lunch will be arranged on the route. Upon arrival to Salekhard, you will be accommodated in a hotel, and have dinner in a local cafe in the evening.

Day 5

After breakfast at the hotel, you will be transferred to the

Salekhard airport.

Accommodation at the trip

On Days 1 and 7 you will stay in the **Arktika Hotel 3***, located in the center of Salekhard. You will be accommodated in standard double rooms. Each of them will have two single beds, bedside tables, closet, desk, coffee table, chairs, flat-screen TV and a private bathroom. There is a restaurant on site.

On days 2-6, you will stay in a chum – reindeer herders' tent. The chum is heated by a stove, there is a sink inside and an outdoor toilet. You will sleep on beds made of reindeer skins in sleeping bags. Sleeping areas for men and women in the tent are divided by canopies. There is a generator in the chum for lighting and for you to charge equipment. There are no showers in the camp.

Please note that at night the oven in the tent is not heated, so you need to have warm sleeping bags with you (rated for extreme temperatures of -30°C), or you can rent them on the spot.

FAQ

Who will be my guide

Experienced guides will work with you throughout the tour: a tour guide and a qualified instructor guide.

Meals

The cost of the tour includes full meal service (except the breakfast in Salekhard on Day 1). At the chum, you will be served national cuisine.

What transport is used on the route

You will travel in comfortable vans in Salekhard and on TRECOL all-terrain vehicles all over the program. Snowmobiles and reindeer sleds are also used in this tour.

What to bring with me

- backpack or travel bag
- warm winter clothes (a jacket with a hood and pants), comfortable at temperatures down to -30°C
- warm Baffin or EVA winter boots
- a set of warm underwear

- a wool sweater or fleece jacket
- warm windproof hat
- warm mittens
- scarf/jacket
- high wool socks, cotton socks
- down sleeping bag with a temperature rating of -20°C (can also be rented locally)
- thermos
- headlamp
- sunglasses or a ski mask
- personal hygiene items
- camera
- chargers for your camera and cell phone, a spare battery
- the minimal stock of favorite foods (sweets, drinking water)
- first aid kit

You can rent a warm sleeping bag Yamal-30 XL V3 with an insert (+7,5 EURO a day per person), and a set of warm clothes and shoes (+12,5 EURO a day per person).

What the weather be like

In February and March, the temperature in Yamal ranges from -5 to -30 °C. It often snows, and there is also often clear sunny weather. You need to be prepared for the extreme cold and take appropriate clothing.

The cost for groups of 2 and more people

We can organize this program for your group of 2 or more on any other date. The cost will depend on the size of the group:

- 4 persons – 2310 EURO per person
- 3 persons – 2820 EURO per person
- 2 persons – 3870 EURO per person

Booking

Yamal

In search of Arctic beasts

Most popular

Difficulty



Age

from 16 y.o.

Group size

to 5

Duration

8 days

Accommodation at the trip



2 nights 5 nights

from 1 945 EUR

What's included in the price:

- double accommodation in a hotel in Salekhard
- accommodation in a chum
- transportation as per program (snowmobile, snowmobile, reindeer sledding)
- full board meals in the city
- meals in the chum (national cuisine)
- excursions as per program
- certificates of Polar Circle Crossing
- guide and instructor services
- guide and instructor services

Extra charge:

- [air tickets](#) to Salekhard (starting at 230 EURO for a round-trip)
- breakfast on day 1
- single occupancy in a hotel in Salekhard (+50 EURO per person/day, optionally)
- insurance
- warm sleeping bag (+7,5 EURO per person/day), a set of warm clothes and shoes (+12,5 EURO per person/day) rental
- personal expenses
- additional reindeer services

— services of an English-speaking guide



Best price
guarantee



Personal
tours



Discounts for
regular clients



Gift
cards